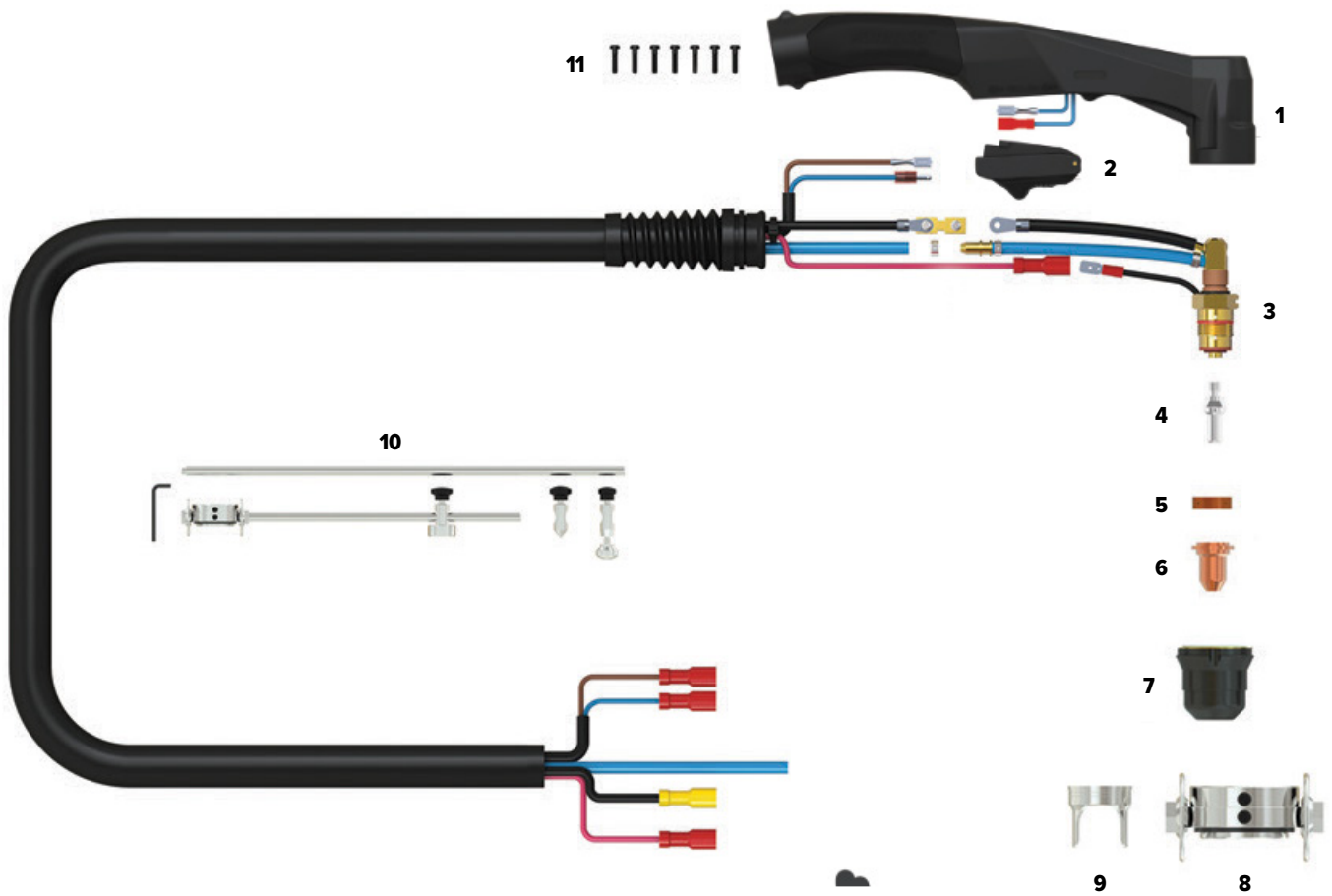


SC30 Plasma Torch



Length	4m
SKU	U43002

1	SG5014R	RED PLASMA HANDLE
2	SC2516R	RED PLASMA SAFETY TRIGGER
3	SC3001	PLASMA TORCH HEAD SUIT SC30
4	PWGSC2504	ELECTRODES SUIT SC30 QTY 5
5	WGSC2506	SWIRL RING SUIT SC30 QTY 1
6	PWGSC2520-09	CUTTING TIPS SUIT SC30 0.9MM QTY 5
7	WGSC2530	RETAINING CAP SUIT SC30 QTY 1
8	WGSC2551	CUTTING GUIDE SUIT SC30 QTY 1
9	WGSC2540	STANDOFF GUIDE SUIT SC30 QTY 1
10	WGSC2550	CIRCLE CUTTING KIT SUIT SC30
11	SCSP1	SCREW PACK TO SUIT HANDLE

COOLING METHOD	Air-Cooled
DUTY CYCLE	60% @ 30A
CUTTING THICKNESS	8-12mm
GAS	Air/N2
GAS PRESSURE	4.5-5.0 Bar / 65-75 psi
GAS FLOW	100L/min
IGNITION	Pilot Arc
POST FLOW	90s
STANDARD	EN60974-7

SC30 Plasma Torch Consumables



Electrode

PWGSC2504	ELECTRODES SUIT SC30 QTY 5
------------------	----------------------------

Swirl Ring

WGSC2506	SWIRL RING SUIT SC30 QTY 1
-----------------	----------------------------

Cutting Tips

PWGSC2520-09	CUTTING TIPS SUIT SC30 0.9MM QTY 5
---------------------	------------------------------------

Retaining Cap

WGSC2530	RETAINING CAP SUIT SC30 QTY 1
-----------------	-------------------------------

Standoff Guide

WGSC2540	STANDOFF GUIDE SUIT SC30 QTY 1
-----------------	--------------------------------

Cutting Guide

WGSC2551	CUTTING GUIDE SUIT SC30 QTY 1
-----------------	-------------------------------