

# UNIMIG ENVY



**CUT45 AIR**



### **5" LCD Touchscreen**

Navigation has never been easier. With the 5" LCD touchscreen, selecting your cut parameters or changing your settings mid-cut is effortless. Prefer physical buttons? Use the traditional control knobs to make all of your adjustments.



### **Built-In Air Compressor**

Ultimate flexibility and cut quality come together in one machine. The internal air compressor means you can use this machine anywhere without needing to attach an external component.



### **Digital Air Pressure Regulation**

Set and forget. The ENVY CUT 120 & 160 feature a built-in digital air pressure regulator that automatically adjusts the output pressure based on your selected cutting mode. This ensures optimal performance across all processes without needing manual pressure adjustments, giving you consistent results with every cut.



## Pilot Arc Start

Start your arc on any surface: painted, greasy, or rusted, or don't start on the surface at all. A pilot arc start will ignite the arc even from a short distance away, giving you better control and longer-lasting consumables.

## Job Memory

The job memory function allows you to enter and store cut parameter settings. Cut parameters can be further adjusted and stored as required. A total of 100 Jobs can be memorised and stored for recall.



## CNC Connectivity

Not just a handheld plasma cutter, the CNC connection lets you plug in a CNC torch and run it on a CNC table, so you can choose how you use it.



### **Smart-Set Programs**

The easiest way to set up for a plasma cut, simply select your cutting type, material type and thickness, and you're good to go!



### **Air Test**

The Air Test feature lets you test the air pressure before proceeding with cutting, to easily check you've set the optimal parameters.



### **Perforated Cut Mode**

Get unrivalled performance across every kind of metal. With the perforated cutting mode, you can cut materials like grating or mesh without interruption, so you're not limited to solid plates.

# ENVY CUT 45 AIR



**PLASMA**

**5 YEAR  
WARRANTY**

## Specifications

SKU	U11604
Primary Input Voltage	240V Single-Phase
Supply Plug	15A
I <sub>eff</sub> (A)	14.5
I <sub>max</sub> (A)	26.5
Rated Output	20-45A
No Load Voltage (V)	380
Protection Class	IP21S
Insulation Class	H
Minimum Generator (kVA)	10
Air Flow Draw (L/min)	190-245
Air Flow Pressure	65.27-87.02 psi 4.5-6.0 bar 0.45-0.6 MPa
Dinse Connector	35/50
Standard	AS 60974.1
Warranty (Years)	5

## Plasma Specifications

Plasma Cut Current Range (A)	20-45
Plasma Cut Duty Cycle @ 40°C	30% @ 45A 60% @ 32A 100% @ 25A
Mild Steel Cut Thickness	20mm
Mild Steel Severance Thickness	25mm
Stainless Cut Thickness	18mm
Aluminium Cut Thickness	14mm
Copper Cut Thickness	8mm

## Size & Weight

Dimensions (mm)	665x220x425
Weight (kg)	23.1

# RECOMMENDED ACCESSORIES

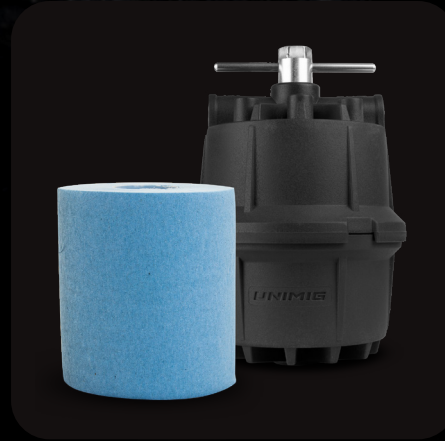


## SC80 CNC Plasma Torch

SKU: WG-SCM80R-40 (4m)

SKU: WG-SCM80R-60 (6m)

SKU: WG-SCM80R-100-CC3-BX (10m)



## Plasma Cutter Air Filter

SKU: U11235



## SC80 Plasma Torch Consumables Starter Kit

SKU: UMSK45



## SC80 Plasma Circle Cutting Kit

SKU: SC8050

# ADDITIONAL FEATURES

## 2T/4T Trigger Modes

Easily swap between torch modes, so you stay comfortable no matter the length of the cut.

**2T:** (two touch) means you need to hold the trigger down on your torch while you cut. Releasing the trigger will end the cut.

**4T:** (four touch) means you only need to press the trigger to ignite the arc and the torch will continue to cut until you press it again to turn it off.

## IP21S Rating

Rated IP21S, so it's protected from touch by fingers and objects greater than 12mm, and water spray from a vertical direction.

## Generator Compatible

Going off the grid? The ENVY CUT 45 AIR can be connected to a generator. We recommend one with at least 10kVA.



# **UNIMIG**

B U I L T F O R W E L D E R S



**100%**  
**AUSTRALIAN**  
**OWNED**

[unimig.com.au](http://unimig.com.au)

[f](#) [@](#) [v](#) [j](#) [@UNIMIG](#)