



UNIMIG STEALTH

RANGE OVERVIEW



Automatic Torch Height Control.

The Automatic Torch Height Control continuously monitors and adjusts the torch height in real time to maintain the optimal height while cutting. By maintaining the optimal torch height, you get a consistent cutting quality, minimal dross, increased consumable life and faster cutter speeds.



UNIMIG Arc Path CNC Control Software.


The 21-inch touchscreen computer comes mounted on a fully adjustable arm and pre-installed with our in-house, custom-designed UNIMIG Arc Path CNC Control software. Arc Path accepts G-Code Design files, or alternatively, you can plug in a USB or a shared network folder and load your own files. We've also included CAM nesting software powered by FLCAM that accepts DXF files and a post-processor script is available to allow seamless CAM output from Autodesk Fusion.



≈

Water Bed With Slat Slots.

The table's water bed absorbs the smoke and dust produced during the cutting process, which gives you a cleaner workspace and reduces the need for extra ventilation or filtration systems. It also helps to cool the material being cut and minimises the amount the plate warps. The slat slots mean you can easily replace slats that become warped or damaged over the table's lifetime.

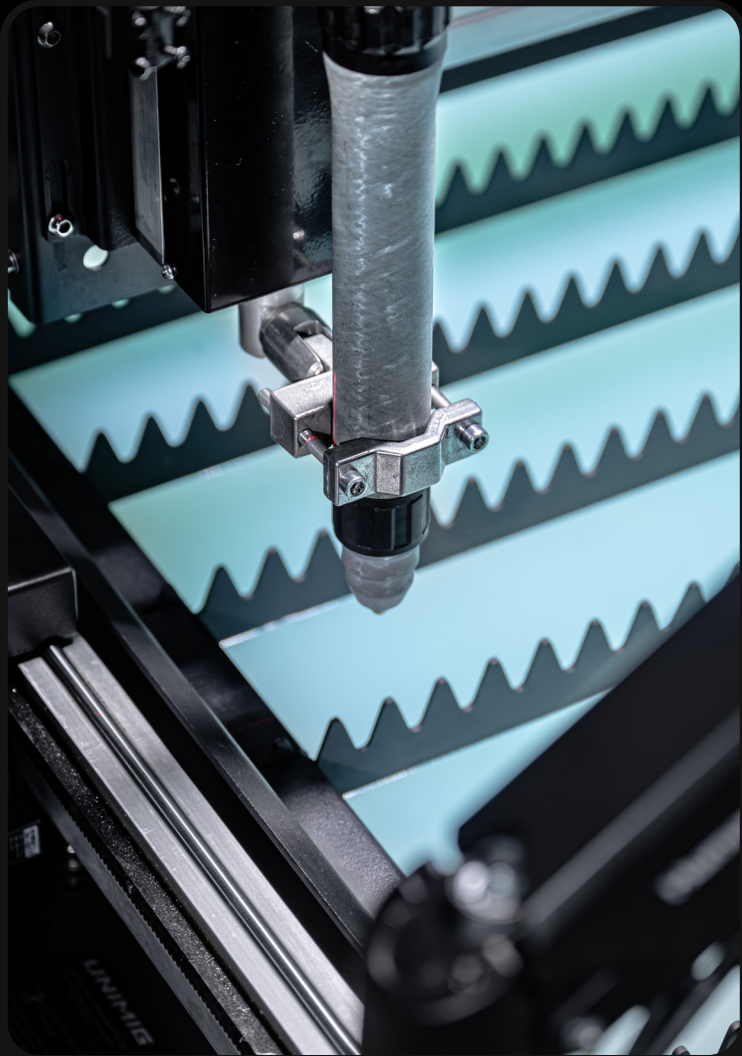


+

Adjustable Sighting Laser.

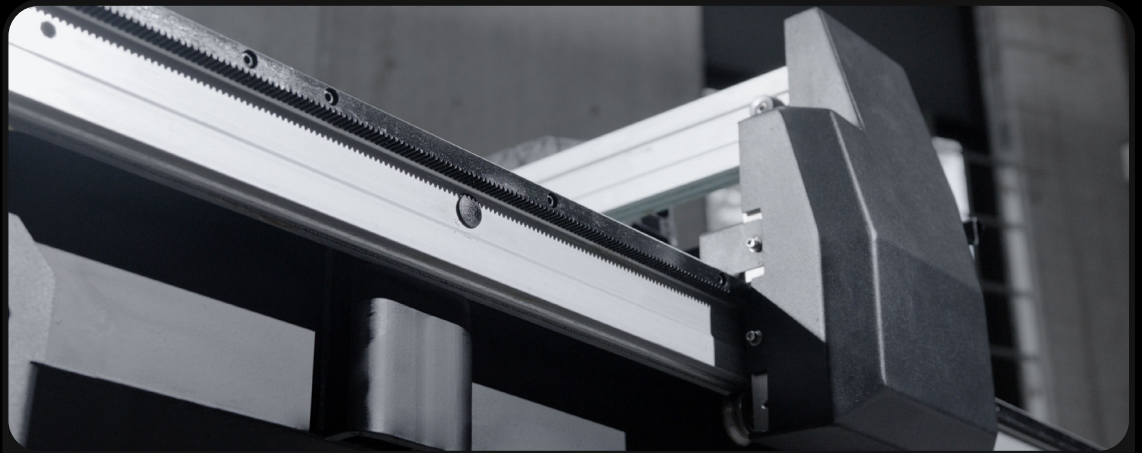
An adjustable sighting laser is included, so you have a clear, constant visual of where the cut will start every time.

STEALTH 1200 + 2400 FEATURES



Minimal Assembly Required

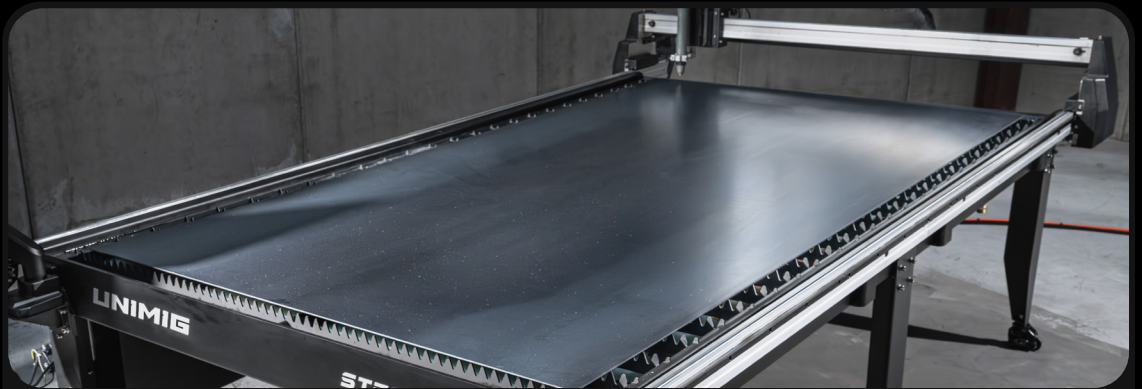
The STEALTH CNC tables arrive almost fully assembled and pre-calibrated, unlike traditional CNC tables, which require extensive setup and calibration. You save time and effort and can get started cutting quickly.



Low Maintenance Rack & Pinion

The rack and pinion systems on the X & Y axes provide consistent and precise linear movement. Made from hardened steel, they're resistant to wear and deformity, prolonging their lifespan and minimising the need for maintenance.

The rack's teeth are straight cut, which distributes the load uniformly across the tooth face and contributes to their precision and reliability. Plus, their inverted position helps protect them from dust, chips, and other contaminants, preventing downtime.



True Cut Size

Reduce material wastage with a true 1.2x1.2m half-sheet or 1.2x2.4m full-sheet cut size. The gantry will travel 1.23x1.22m on the STEALTH 1200 CNC, and 1.23x2.44m on the STEALTH 2400 CNC, so you can guarantee you'll get the full size of the table to cut across.

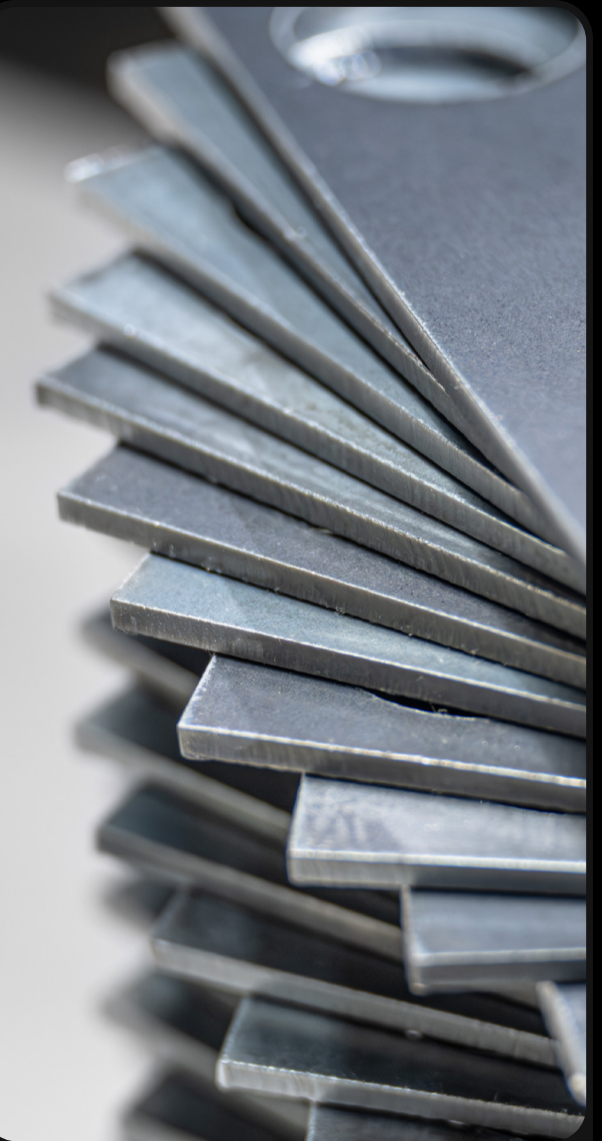
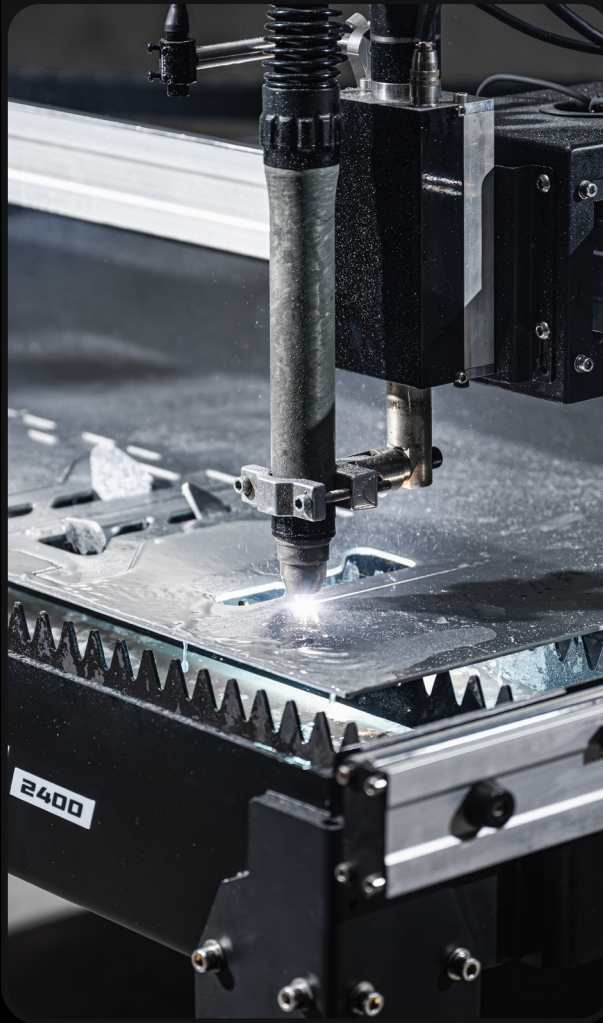


Adjustable Level Caster Feet

Easily move the table using the swivel caster wheels and achieve easy and precise table level across most surfaces with the adjustable levelling feature on the wheels.

Automatic Collision Detection & Limiter Switches On All Axes

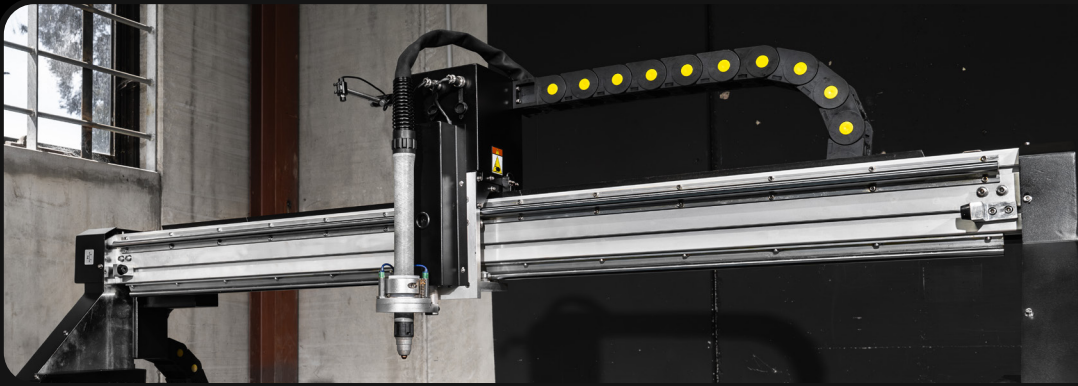
With limiter switches on all axes and an automatic collision detection system, the STEALTH CNC tables use sensors, software algorithms, and real-time data processing to detect and prevent potential collisions and stop them from exceeding their predefined range of motion.



Maximise Your Production

Let the STEALTH CNC tables handle the heavy lifting so you can increase your productivity. The STEALTH CNC tables allow you to produce more parts and projects efficiently. Optimise your cuts and nest parts on full sheets to minimise loading time and reduce material waste.

STEALTH 3000 FEATURES



⚡ Industrial Servo Motor & Belt Transmission

The industrial servo motor delivers exceptional precision, responsiveness and reliability. Working in conjunction with a feedback system, the motor's position, speed, and torque can be adjusted based on real-time data.



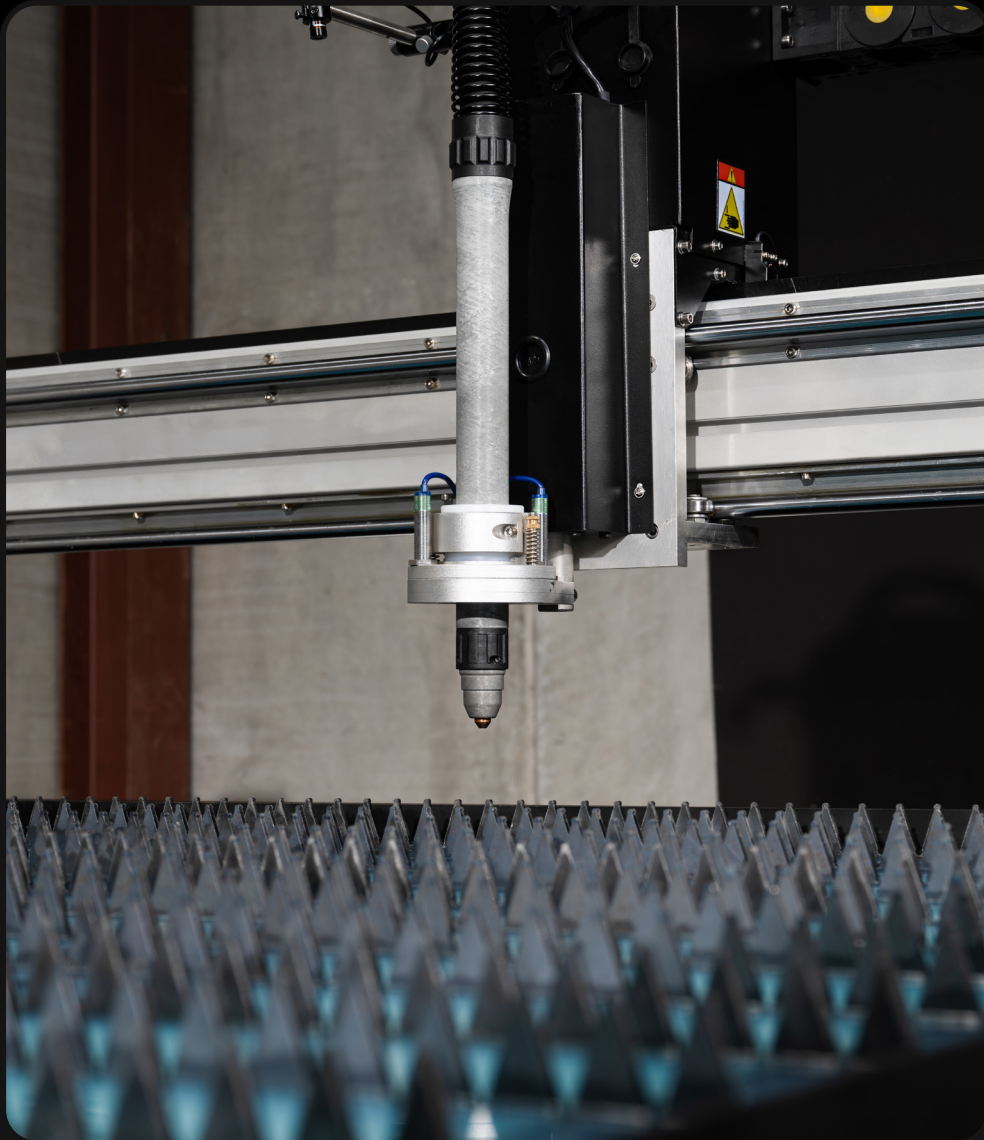
↔ 3m x 1.5m True Cut Size

A true 3 by 1.5 metre full commercial sheet cut size. The gantry will travel 3.04 by 1.54 metres, so you can guarantee you'll get the full size of the table to cut across. Its heavy-duty construction means it can handle full sheet loads of mild steel up to 40mm thick.



🏗️ Independent CNC Frame

The independent frame protects the motor and rails from warping or any damage that heavy workloads can cause. Plus, it allows for easy repair or replacement of the waterbed without needing to recalibrate the table.



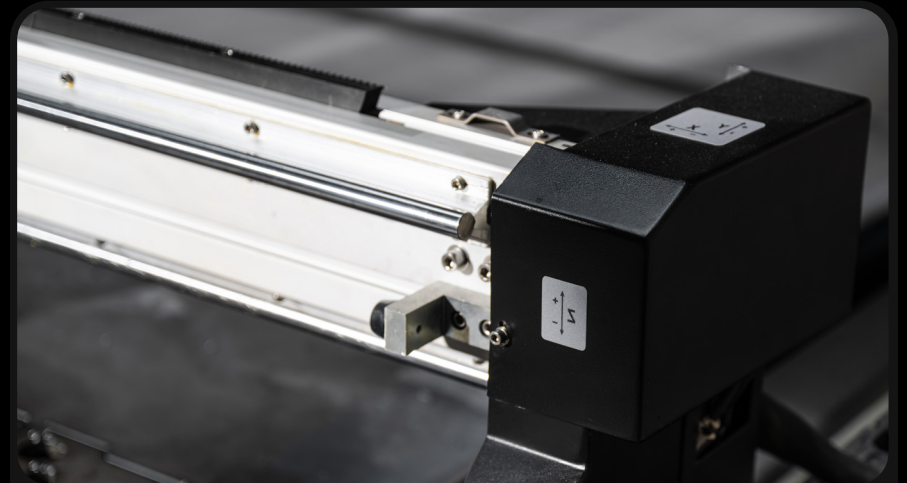
Adjustable Collision Detection Torch Holder

The collision detection torch holder comes with spring-loaded tensioners that give way on impact to protect your torch and dual proximity sensors that immediately halt operations to prevent further damage. The collision sensitivity can be fine-tuned with adjustable tension settings for a customised response to suit your needs. Plus, the spring-loaded design resets your torch position automatically, so you don't need to recenter your torch each time there's a collision.



Heavy-Duty Steel Construction

Engineered with robust, high-performance components, it's built to withstand the rigours of heavy-duty production. The water bed features laser-welded seams, so there are no bolts or any silicon sealing, so it's completely leak-free.



Helical Rack & Pinion Drive

Comprised of hardened tool grade steel, the helical rack and pinion design offers smoother, quieter motion and minimises backlash, ensuring precise and consistent performance.

UNIMIG ARCPATH

UNIMIG ArcPath CNC Control Software

Introducing our CNC Control software, Arc Path. Designed in Australia to meet the rigorous demands of both Australian fabrication shops and CNC operators alike, this software seamlessly integrates with the Stealth 1200, 2400 and 3000 CNC Plasma Cutting tables, providing a robust and versatile solution for all your cutting needs.

The CNC Control software features a touch screen interface for quick and intuitive control, allowing users to navigate effortlessly through its powerful functionalities. For those who prefer traditional methods, the software also supports standard mouse operation.

Arc Path is packed with powerful tools that streamline cut preparation and significantly reduce both time and material wastage, optimising your cutting processes for maximum efficiency.

File Manager

Using the Windows operating system, you can easily share files via the network or with common USB sticks to move between PCs. The file manager in Arc Path lets you access your files just as you would on any PC. You can also duplicate, delete, rename, and move files as needed.

Jog Modes

- Toggle** - Press and hold to move.
- Continuous** - Press and release to move.
- Step** - Press to move a preset distance.

Job Control Panel

With Arc Path, you can easily pause an active cut job, rewind the cut, or move forward along the cut path. You can also specify a particular hole or line for the torch to move to.

Tool Panel

Quickly edit your existing design using our powerful and convenient tools. Satisfied with the changes? You have the option to overwrite the original design or save it as a new one.

- Scale
- Rotate
- Plate Angle Adjust
- Pattern - Array
- Edit G-Code
- Revert Changes
- Zero Orientation

Cut Parameters

A database of pre-configured settings for the most common material types and thicknesses, tailored for use with UNIMIG plasma cutters. You can also create your own parameters based on your individual cutting preferences.

Kerf Compensation

Easily adjust the kerf compensation based on your consumables on the fly. This allows you to achieve precise cuts without the need to alter your design files.

Easy Cut Sighting

Arc Path features several tools that aid in both sighting the cut position and determining how much material the cut will use.

Laser Offset - Replace the torch position with the laser position with a single press.

Frame Test - Shows you the perimeter square for your active design file.

Demo Mode - Run the cut job like normal without firing the plasma torch. This allows you to spot potential issues before wasting material.

Shape Library

With 99 different shapes, Arc Path can quickly perform cuts of various commonly used lines, shapes, or calibration cuts. The shapes are fully editable, including lead-ins and lead-outs.

STEALTH RANGE OVERVIEW



| FEATURE | 3000 | 2400 | 1200 |
|----------------------------------------------------------------|-----------|-------------|-------------|
| ↕ MAXIMUM CUT SIZE | 3m x 1.5m | 2.4m x 1.2m | 1.2m x 1.2m |
| ≈ WATER BED WITH SLAT SLOTS | ✓ | ✓ | ✓ |
| + ADJUSTABLE SIGHTING LASER | ✓ | ✓ | ✓ |
| 📄 UNIMIG ARCPATH SOFTWARE | ✓ | ✓ | ✓ |
| ↔ AUTOMATIC COLLISION DETECTION & LIMITER SWITCHES ON ALL AXES | ✓ | ✓ | ✓ |
| ⚡ AUTOMATIC TORCH HEIGHT CONTROL | ✓ | ✓ | ✓ |
| ⚙️ STRAIGHT CUT RACK & PINION | ✓ | ✓ | ✓ |
| ⚙️ HELICAL RACK & PINION DRIVE | ✓ | ✓ | ✓ |
| ⚙️ INDEPENDANT CNC FRAME | ✓ | ✓ | ✓ |
| ⚡ INDUSTRIAL SERVO MOTOR & BELT TRANSMISSION | ✓ | ✓ | ✓ |
| ⚠️ ADJUSTABLE COLLISION DETECTION TORCH HOLDER | ✓ | ✓ | ✓ |



STEALTH 1200



PLASMA

CNC Table Specifications

| | |
|-------------------------|----------------------------------------------------------------------|
| SKU | U11097 |
| Max Cut Dimensions (m) | 1.23 x 1.22 |
| Max Table Load (kg) | 175 |
| Water Bed Capacity (L) | 175 |
| Table Input Voltage | 240V Single-Phase |
| Axis Type | 3 Axis (X/Y/Z) |
| Height Control | Automatic & Manual |
| Axis Limiter | Physical X/Y/Z Proximity Sensor Switches |
| Fume & Spark Management | Built-in Water Bed with Integrated Slot Slots |
| Maximum Jog Speed | 8,000mm/m |
| CNC Controller | Purpose Built Multi-Tool Controller |
| Control Interface | Windows 10 PC with 21" Touchscreen |
| Software | UNIMIG ARC PATH CNC Control Software + CAM/Nesting Software Included |

Control PC Specifications

| | |
|------------------|-----------------------------------|
| Operating System | Windows 10 |
| Screen Panel | 21" Touchscreen |
| Hardware | Intel Core i3, 8GB RAM, 128GB SSD |
| Networking | Ethernet, Wi-Fi, Bluetooth |

Size & Weight

| | |
|--------------------------|-------------|
| Exterior Dimensions (cm) | 160x170x110 |
| Table Weight (kg) | 200 |

Required Accessories

- Plasma Source
- CNC Plasma Torch
- Air Compressor
- Water Table Additive

STEALTH 2400



PLASMA

CNC Table Specifications

| | |
|-------------------------|----------------------------------------------------------------------|
| SKU | U11098 |
| Max Cut Dimensions (m) | 1.23 x 2.44 |
| Max Table Load (kg) | 285 |
| Water Bed Capacity (L) | 350 |
| Table Input Voltage | 240V Single-Phase |
| Axis Type | 3 Axis (X/Y/Z) |
| Height Control | Automatic & Manual |
| Axis Limiter | Physical X/Y/Z Proximity Sensor Switches |
| Fume & Spark Management | Built-in Water Bed with Integrated Slot Slots |
| Maximum Jog Speed | 8000mm/m |
| CNC Controller | Purpose Built Multi-Tool Controller |
| Control Interface | Windows 10 PC with 21" Touchscreen |
| Software | UNIMIG ARC PATH CNC Control Software + CAM/Nesting Software Included |

Control PC Specifications

| | |
|------------------|-----------------------------------|
| Operating System | Windows 10 |
| Screen Panel | 21" Touchscreen |
| Hardware | Intel Core i3, 8GB RAM, 128GB SSD |
| Networking | Ethernet, Wi-Fi, Bluetooth |

Size & Weight

| | |
|--------------------------|-------------|
| Exterior Dimensions (cm) | 280x170x110 |
| Table Weight (kg) | 340 |

Required Accessories

- Plasma Source
- CNC Plasma Torch
- Air Compressor
- Water Table Additive

STEALTH 3000



PLASMA

CNC Table Specifications

| | |
|-------------------------|----------------------------------------------------------------------|
| SKU | U11206 |
| Max Cut Dimensions (m) | 1.54 x 3.04 |
| Max Table Load (kg) | 1000 |
| Water Bed Capacity (L) | 650 |
| Table Input Voltage | 240V Single-Phase |
| Axis Type | 3 Axis (X/Y/Z) |
| Height Control | Automatic & Manual |
| Axis Limiter | Physical X/Y/Z Proximity Sensor Switches |
| Fume & Spark Management | Separated Water Bed with Slot Slots |
| Maximum Jog Speed | 9000mm/m |
| CNC Controller | Purpose Built Multi-Tool Controller |
| Control Interface | Windows 10 PC with 21" Touchscreen |
| Software | UNIMIG ARC PATH CNC Control Software + CAM/Nesting Software Included |

Control PC Specifications

| | |
|------------------|-----------------------------------|
| Operating System | Windows 10 |
| Screen Panel | 21" Touchscreen |
| Hardware | Intel Core i3, 8GB RAM, 128GB SSD |
| Networking | Ethernet, Wi-Fi, Bluetooth |

Size & Weight

| | |
|--------------------------|-------------|
| Exterior Dimensions (cm) | 220x385x145 |
| Table Weight (kg) | 900 |

Required Accessories

- Plasma Source
- CNC Plasma Torch
- Air Compressor
- Water Table Additive

Recommended Accessories



RAZOR CUT 45

U14006K



RAZOR CUT 80

KUPJRRW80



RAZOR CUT 120

U14002K



RAZOR CUT 160

U14004K



RAZOR CUT 160

U14004K



SC80 CNC Plasma Torch

WG-SCM80R-40 (4m)
WG-SCM80R-60 (6m)
WG-SCM80R-100-
CC3-BX (12m)



SC120 CNC Plasma Torch

U43001 (12m)



SC160 CNC Plasma Torch

U43011 (6m)
U43012 (12m)



Plasma Cutter Air Filter

50500-12



CNC Plasma Table Treatment

U11118 (5L)
U11156 (20L)

UNIMIG

B U I L T F O R W E L D E R S



100%
AUSTRALIAN
OWNED

unimig.com.au

[f](#) [@](#) [v](#) [j](#) [@UNIMIG](#)