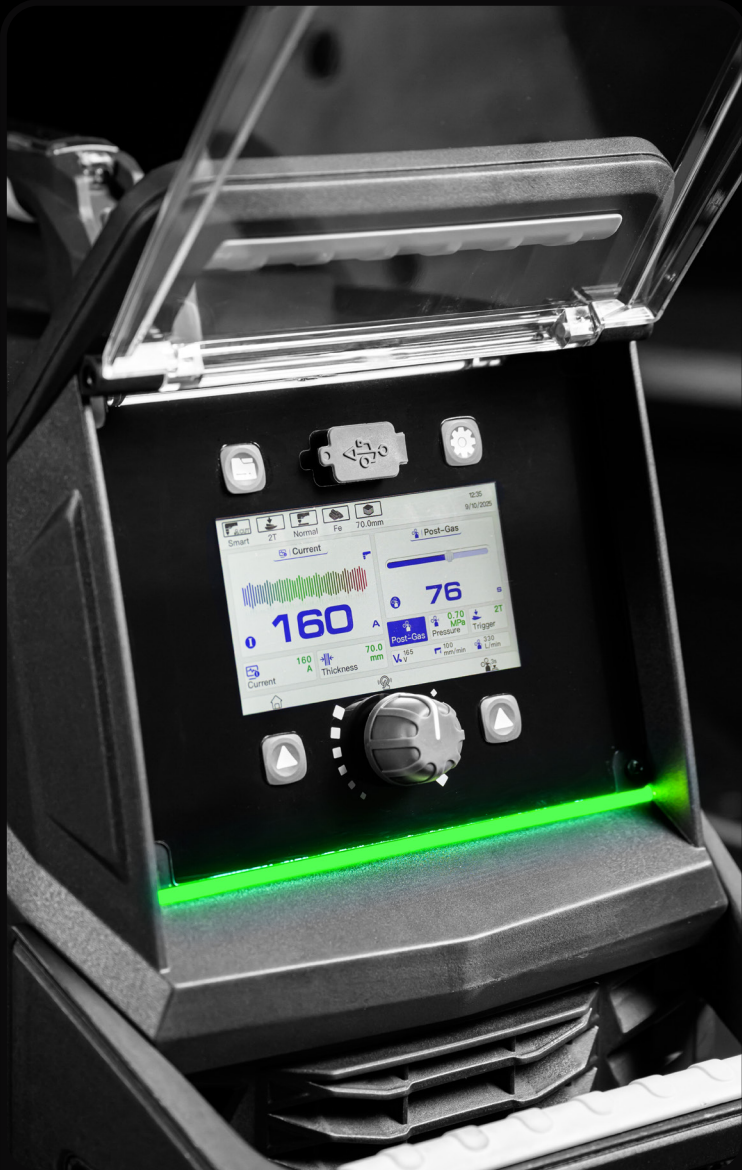


UNIMIG ENVY



CUT120/160



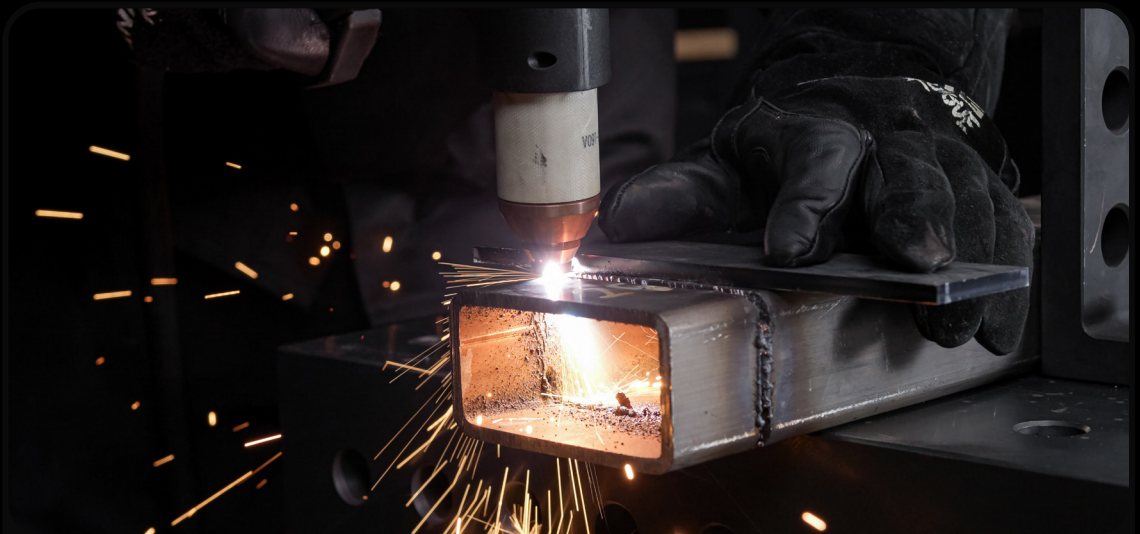
5" LCD Touchscreen

Navigation has never been easier. With the 5" LCD touchscreen, selecting your cut parameters or changing your settings mid-cut is effortless. Prefer physical buttons? Use the traditional control knobs to make all of your adjustments.



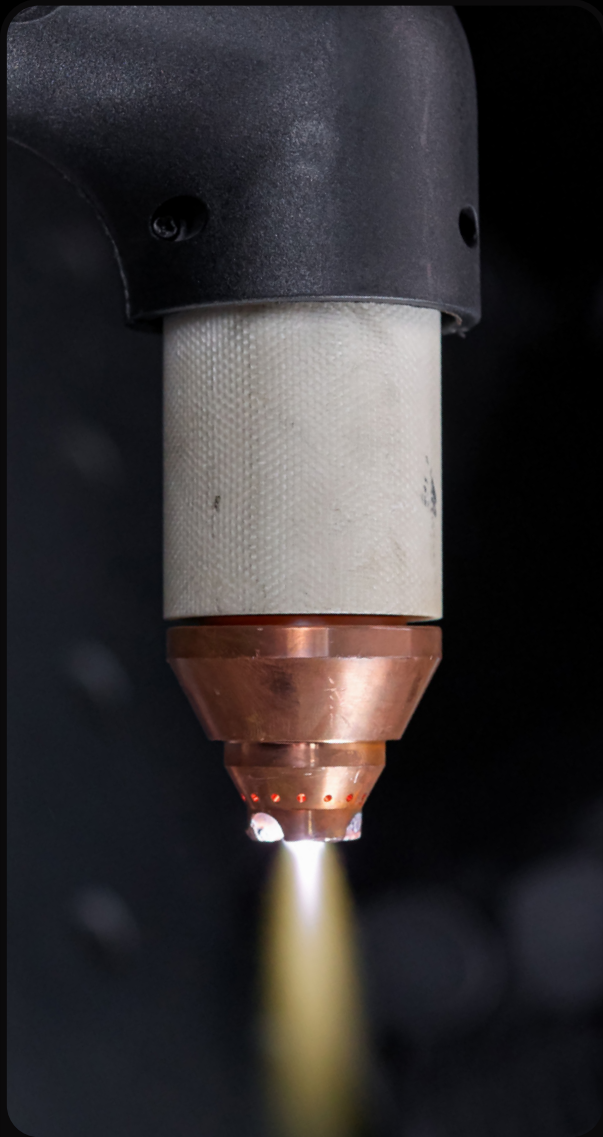
CNC Connectivity

Not just a handheld plasma cutter, the CNC connection lets you plug in a CNC torch and run it on a CNC table, so you can choose how you use it.



Digital Air Pressure Regulation

Set and forget. The ENVI CUT 120 & 160 feature a built-in digital air pressure regulator that automatically adjusts the output pressure based on your selected cutting mode. This ensures optimal performance across all processes without needing manual pressure adjustments, giving you consistent results with every cut.



✦ Pilot Arc Start

Get unrivalled performance across every kind of metal. With the perforated cutting mode, you can Start your arc on any surface: painted, greasy, or rusted, or don't start on the surface at all. A pilot arc start will ignite the arc even from a short distance away, giving you better control and longer-lasting consumables.

🔄 Job Memory

The job memory function allows you to enter and store cut parameter settings. Cut parameters can be further adjusted and stored as required. A total of 100 Jobs can be memorised and stored for recall.



🌀 Air Test

The Air Test feature lets you test the air pressure before proceeding with cutting, to easily check you've set the optimal parameters.



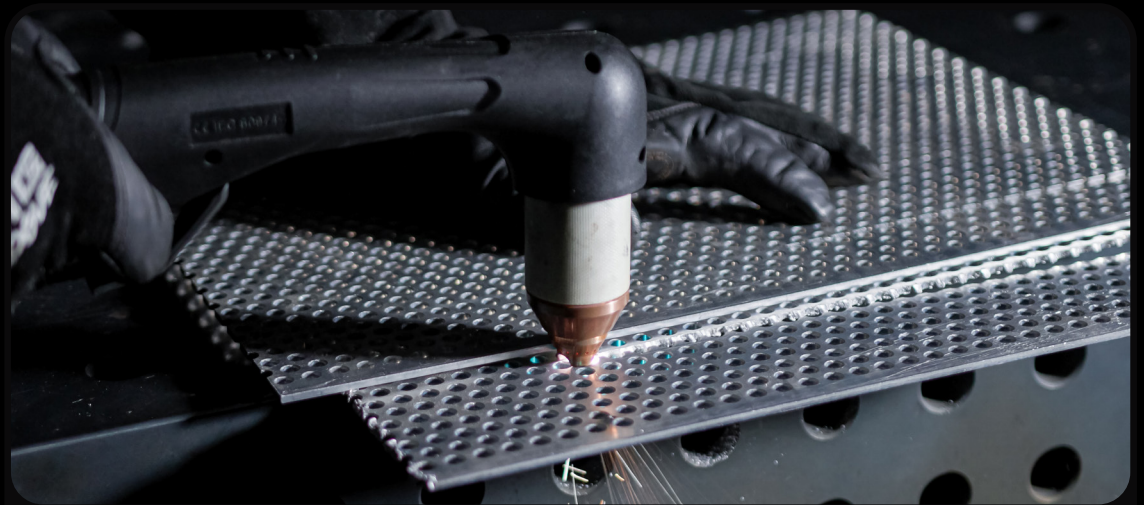
Smart-Set Programs

The easiest way to set up for a plasma cut, simply select your cutting type, material type and thickness, and you're good to go!



Gouging Mode

Remove metal with precision and ease. Switch to gouging mode to cleanly remove welds, defects, or unwanted material without grinding and preserve more of your original workpiece.



Perforated Cut Mode

Get unrivalled performance across every kind of metal. With the perforated cutting mode, you can cut materials like grating or mesh without interruption, so you're not limited to solid plates.

ENVY CUT 120



PLASMA

**5 YEAR
WARRANTY**

Specifications

SKU	U11540
Primary Input Voltage	415V Three-Phase
Supply Plug	32A
Ieff (A)	27.5
Imax (A)	27.5
Rated Output	20-120A
No Load Voltage (V)	402
Protection Class	IP21S
Insulation Class	H
Minimum Generator (kVA)	26
Air Flow Draw (L/min)	140-330
Air Flow Pressure	43.5-101.5psi 3-7bar 0.3-0.7MPa
Dinse Connector	35/50
Standard	AS 60974.1
Warranty (Years)	5

Plasma Specifications

Plasma Cut Current Range (A)	20-120
Plasma Cut Duty Cycle @ 40°C	100% @ 120A
Mild Steel Cut Thickness	50mm
Mild Steel Severance Thickness	70mm
Stainless Cut Thickness	45mm
Aluminium Cut Thickness	40mm
Copper Cut Thickness	25mm

Size & Weight

Dimensions (mm)	810x280x520
Weight (kg)	39.2

ENVY CUT 160



PLASMA

**5 YEAR
WARRANTY**

Specifications

SKU	U11541
Primary Input Voltage	415V Three-Phase
Supply Plug	32A
Ieff (A)	32.9
Imax (A)	42.4
Rated Output	20-160A
No Load Voltage (V)	400
Protection Class	IP21S
Insulation Class	H
Minimum Generator (kVA)	40
Air Flow Draw (L/min)	140-330
Air Flow Pressure	43.5-101.5psi 3-7bar 0.3-0.7MPa
Dinse Connector	35/50
Standard	AS 60974.1
Warranty (Years)	5

Plasma Specifications

Plasma Cut Current Range (A)	20-160
Plasma Cut Duty Cycle @ 40°C	60% @ 160A 100% @ 100A
Mild Steel Cut Thickness	65mm
Mild Steel Severance Thickness	80mm
Stainless Cut Thickness	60mm
Aluminium Cut Thickness	50mm
Copper Cut Thickness	35mm

Size & Weight

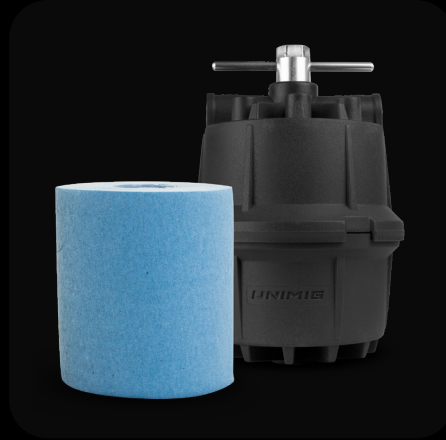
Dimensions (mm)	810x280x520
Weight (kg)	45.4

RECOMMENDED ACCESSORIES



SC160 CNC Plasma Torch

SKU: U43011 (6m)
SKU: U43012 (12m)



Plasma Cutter Air Filter

SKU: U11235



Professional Series Welding Helmet

SKU: U21015 (Black) / U21018 (Demon)
/ U21019 (Samurai)



Rogue General Purpose Welding Gloves Model 102

SKU: U22028 (M) / U22001 (L) /
U22029 (XL)

ADDITIONAL FEATURES

Generator Compatible

Going off the grid? The ENVY CUT 120 & 160 can be connected to a generator. We recommend one with at least 26kVA for the ENVY CUT 120 and 40kVA for the ENVY CUT 160.

Smart Fan

Smart Fan diminishes noise, saves power, helps reduce energy costs, and minimises the number of contaminants being pulled through the machine.

2T/4T Trigger Modes

Easily swap between torch modes, so you stay comfortable no matter the length of the cut.

2T: (two touch) means you need to hold the trigger down on your torch while you cut. Releasing the trigger will end the cut.

4T: (four touch) means you only need to press the trigger to ignite the arc and the torch will continue to cut until you press it again to turn it off.

IP21S Rating

Rated IP21S, so it's protected from touch by fingers and objects greater than 12mm, and water spray from a vertical direction.

UNIMIG

B U I L T F O R W E L D E R S



100%
AUSTRALIAN
OWNED

unimig.com.au

[f](#) [@](#) [v](#) [j](#) [@UNIMIG](#)